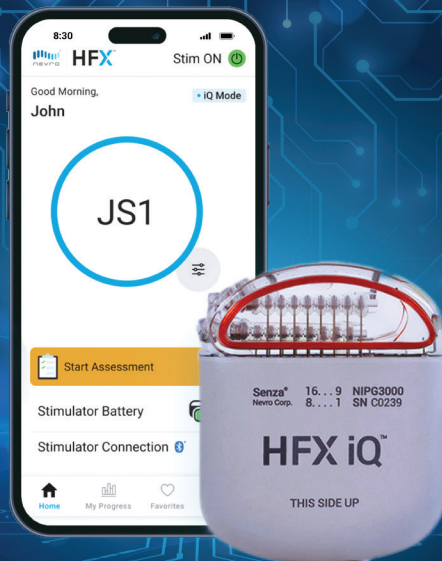


Intelligent. Responsive.

Welcome to the relentless
pursuit of **optimal relief**



The only SCS system with HFX Adaptiv**AI**[™]
that combines Level 1 evidence and big data insights
to deliver responsive relief for the ever-changing patient journey^{*}

Now with Advanced Proactive Remote Monitoring

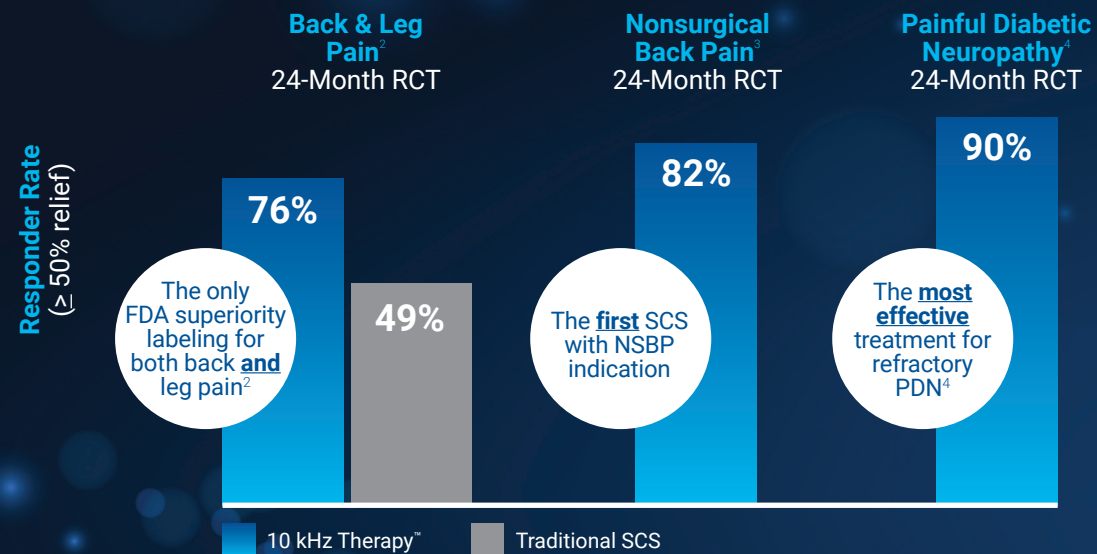


HFX AdaptivAI****[™]

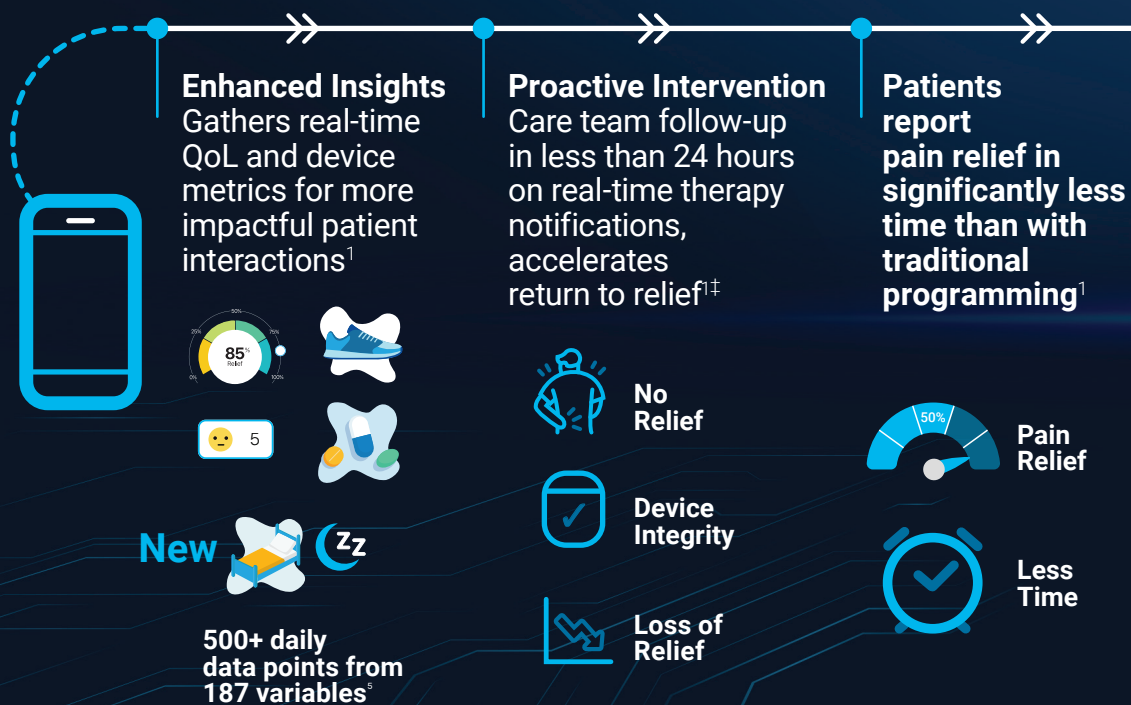
powering **HFXiQ**

Welcome to the relentless pursuit of optimal relief

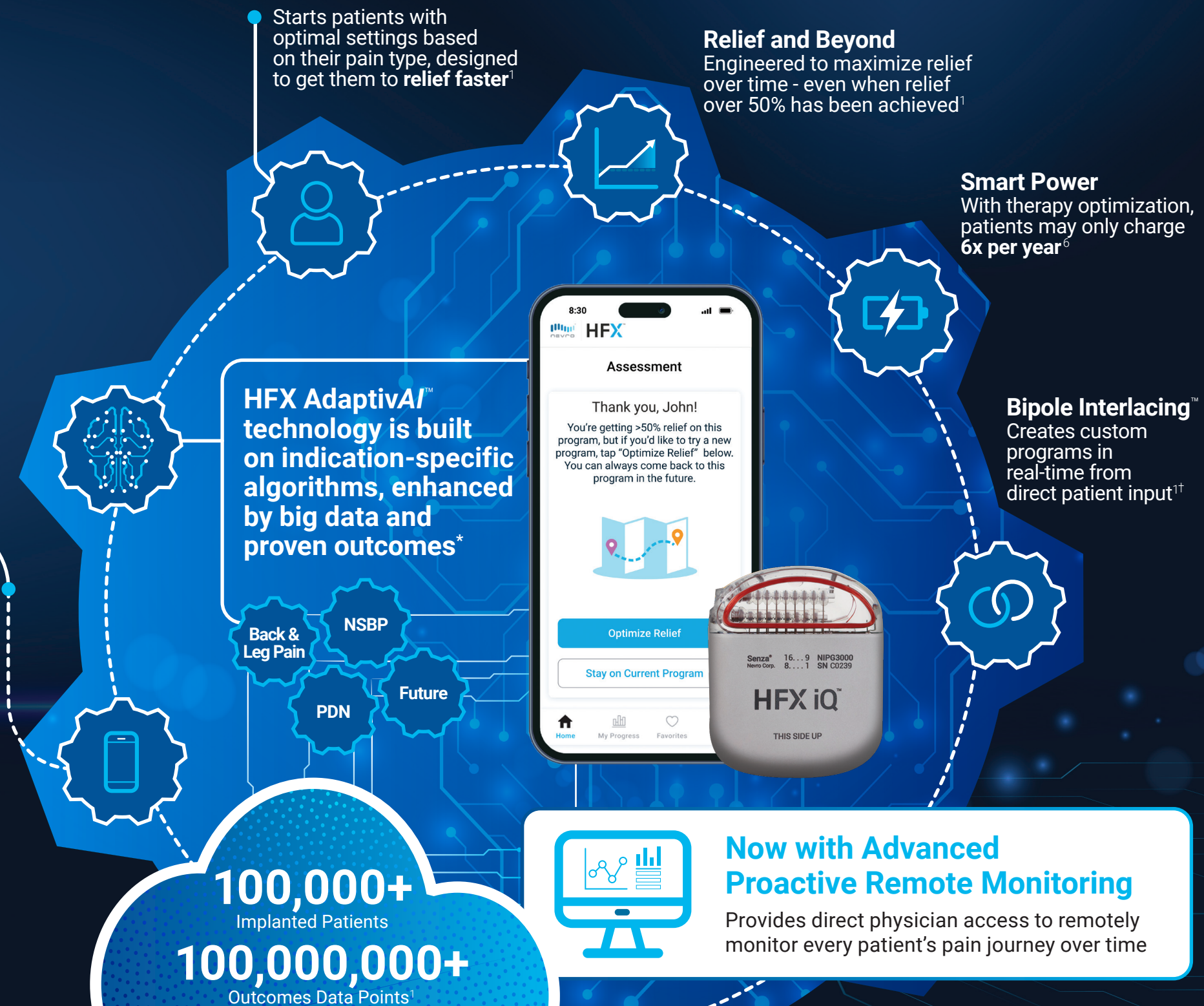
Therapy built on landmark evidence¹



Real-time app engagement is designed to improve therapy compliance and accelerate relief¹



Responsive, personalized pain management via HFX AdaptivAI[™] technology*



Intelligent. Responsive. Relief.

- Therapy built on landmark evidence¹
- HFX AdaptivAI™ technology delivers responsive, personalized pain management*
- Real-time app engagement is designed to improve therapy compliance and accelerate relief¹
- Advanced Proactive Remote Monitoring of patient data improves patient care and efficiency



HFX AdaptivAI™ puts patients in control of their pain relief while providing remote patient monitoring to clinicians.

Patient experiences with the HFX iQ™ or Senza Omnia™ spinal cord stimulation (SCS) system vary by individual, including the amount of pain relief. The occurrence of adverse effects associated with SCS implant surgery or use also varies by patient. **Indications for Use:** The HFX iQ, Senza Omnia, and HFX Trial SCS systems aid in the management of chronic intractable pain of the trunk and/or limbs, and, when programmed to 10 kHz, are indicated as aids in the management of chronic intractable pain of the lower limbs associated with diabetic neuropathy and the management of non-surgical refractory back pain. **Contraindications:** These include patients who are poor SCS surgical candidates, are unable to operate the SCS system and fail to receive effective pain relief during trial stimulation. **Warnings:** Interference with other implanted stimulators, may result in sensing problems or inappropriate responses. Sources of electromagnetic interference may result in unexpected changes in stimulation, serious patient injury and system damage. Energy from diathermy can cause tissue damage, resulting in severe injury or death. Senza implantable stimulators are MR conditional and scanning under different conditions may result in severe patient injury or device malfunction. Use of certain medical devices or procedures (electrocautery, radiation therapy, ultrasonic scanning) may result in device damage. Induced electrical currents from radiofrequency (RF) or microwave ablation may cause heating, resulting in tissue damage. **Precautions:** Avoid activities that put stress on the implanted components. Safety has not been established for Transcranial Magnetic Stimulation (TMS) or Electroconvulsive Therapy (ECT) in patients who have an implanted SCS system. Persistent discomfort or excessive redness may indicate infection. **Adverse Events:** May include hematoma, epidural hemorrhage, paralysis, pain at implant site, infection and other surgical risks. Device related adverse events may include loss of pain relief or paresthesia, undesirable change in stimulation (uncomfortable, jolting or shocking sensation), tissue reaction or allergy to implanted materials. Refer to www.nevro.com/manuals for product manuals with complete indications, contraindications, warnings, precautions and potential adverse events.

* HFX AdaptivAI™ technology includes an advanced algorithm with an ability to interlace bipoles. Senza HFX iQ uses a fixed set of instructions to provide optimized treatment recommendations that utilize direct patient input from assessments on pain and quality of life measures. Big data is referring to Nevro's internal cloud database. † Customized programs are pre-defined parameters programmed by the physician. ‡ Calls made during business hours.

1. Data on file. 2. Kapural, L., et al. (2016). Comparison of 10-kHz high-frequency and traditional low-frequency spinal cord stimulation for the treatment of chronic back and leg pain: 24-month results from a multicenter, randomized, controlled pivotal trial. *Neurosurgery*, 79(5), 667–677. 3. Patel, N.P., et al. (2023). Durable responses at 24 months with high-frequency spinal cord stimulation for nonsurgical refractory back pain. *J Neurosurg Spine*:1-11. 4. Petersen, E., et al. (2023). Long-Term Efficacy of High-Frequency (10 kHz) Spinal Cord Stimulation for the Treatment of Painful Diabetic Neuropathy: 24-Month Results of a Randomized Controlled Trial. *Diabetes Research and Clinical Practice*, 110865. 5. Data on file. Patients using the HFX App. 6. Data on file, 3% PD 10 KHz 30 µs 2.0 mA 20 secs 10mins 800 Ohms.

HFX, the HFX logo, HFX iQ, the HFX iQ logo, HFX AdaptivAI, Bipole Interlacing, 10 kHz Therapy, NEVRO, and the NEVRO logo are trademarks or registered trademarks of Nevro Corp. © 2024 Nevro Corp. All Rights Reserved. S004149